



BACKBONE  
 Ident. Cabo : MANACAPURU - MANAUS

ID da Fibra/Número : FO 1

Origem : MANACAPURU  
 ID da OS : INFOVIA EAF PAC

Extremidade : 4CTA  
 ID do Técnico : ROBSON

SmartOTDR (S/N 99308)

E138FB65 (S/N 99308)

Data de Calibração : 03/01/2025

Data : 09/01/2026 14:13 (UTC+0)

Setup

OTDR  
 EXPERT

Laser  
 1550nm

Pw  
 3us

Alcance  
 160km

Tempo de Aquisição  
 30.0s

IOR  
 1.46800(G652 G657)

Coef. de Dispersão  
 -81.0 dB

Bobina de Lançamento  
 1.001 km

Bobina Recepção  
 Nenhuma

Alarmes

Limites

None

Resumo

Nome do Arquivo

Laser nm

Perda Total dB

Link ORL dB

Fim da Fibra Km

Direção

Perda Média dB/Km

Evento Alarmes

MANACAPURU\_4CTA\_0001.msor

1550

25.101

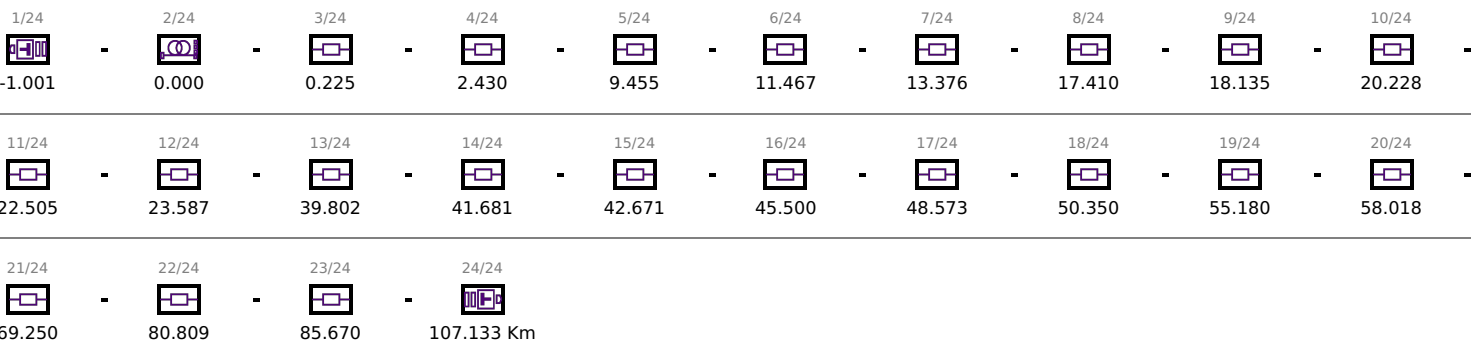
31.92

107.133

MANACAPURU -> 4CTA

0.234

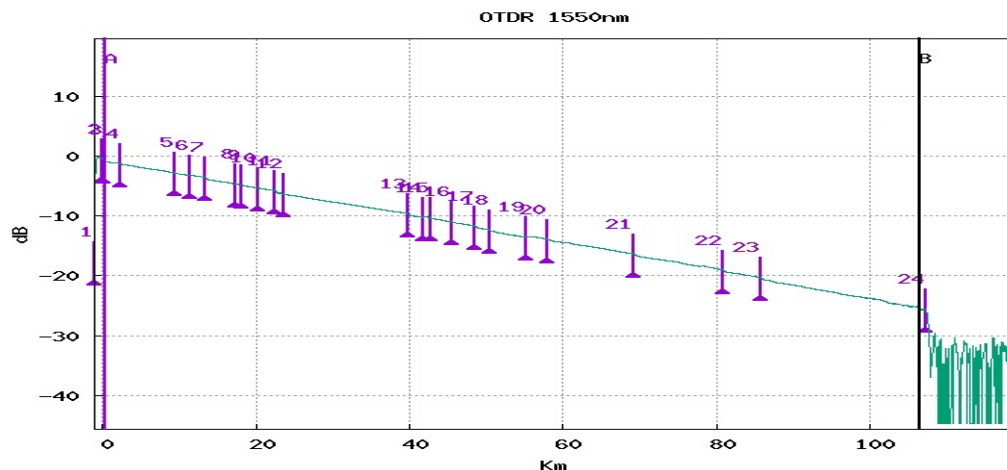
24



A : 0.327km -0.846 dB  
 B : 106.336km -25.240 dB

A-B : 106.010km 0.230 dB/Km

**24.394 dB**



Evento	Distância Km	Perda dB	Reflect. dB	Declive dB/km	Secção Km	P. Total dB
1	-1.001	0.191	-109.60		0.000	0.000
2	0.000	0.182			1.001	
3	0.225	0.278			0.225	0.225
4	2.430	0.113		0.168	2.206	0.873
5	9.455	0.088		0.199	7.025	2.387
6	11.467	-0.057		0.184	2.012	2.846
7	13.376	0.326		0.184	1.909	3.138
8	17.410	0.054		0.191	4.033	4.236
9	18.135	0.063		0.194	0.725	4.432
10	20.228	0.082		0.202	2.093	4.918
11	22.505	0.382		0.131	2.277	5.297
12	23.587	0.113		0.166	1.082	5.860
13	39.802	0.272		0.200	16.215	9.213
14	41.681	-0.138		0.186	1.879	9.833
15	42.671	0.125		0.161	0.990	9.854

16	-□-	45.500	0.078	0.201	2.828	10.585
17	-□-	48.573	0.316	0.191	3.073	11.247
18	-□-	50.350	0.138	0.198	1.777	11.915
19	-□-	55.180	-0.228	0.188	4.830	13.136
20	-□-	58.018	0.122	0.203	2.839	13.486
21	-□-	69.250	0.294	0.206	11.232	15.925
22	-□-	80.809	0.287	0.203	11.559	18.569
23	-□-	85.670	0.319	0.203	4.860	19.843
24	☐	107.133		0.230	21.463	25.101